

How are colleges supporting their communities through the cost of living crisis?

About us



- Andrew Cox, Group Director of Strategic Growth and Partnerships at London South East Colleges
- Leo Webster, Strategy Manager at NCFE
- Michael Lemin, Head of Policy at NCFE.



Agenda

- Setting the scene
- Student engagement and support
- How colleges are supporting their local communities
- Partnership engagement and support
- Q&A.





Setting the scene

Cost of living pressures

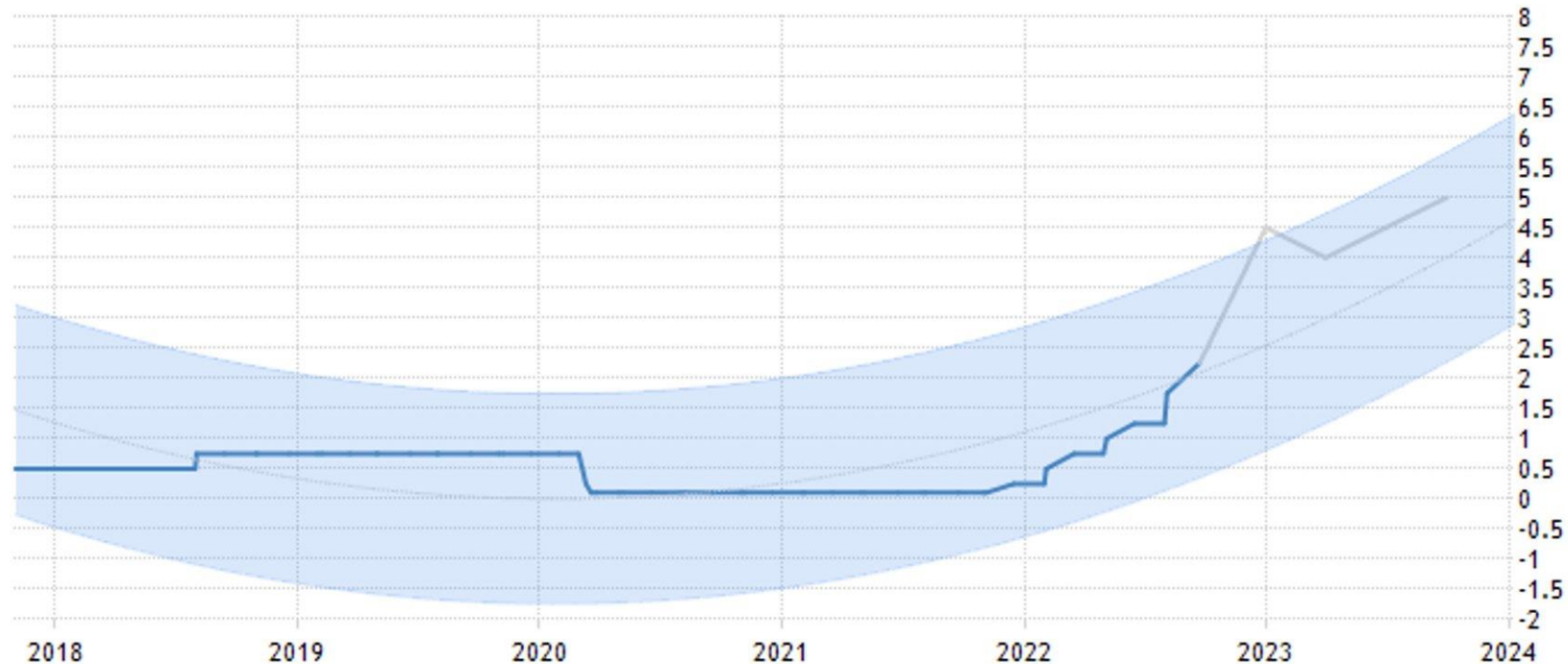


Learners	Parents	Employers
Lower participation	Falling household incomes	Wages and utilities prioritised over training
Difficulty paying for meals and travel, electricity costs	Pressure to contribute to household costs	Work placements may be seen as an unnecessary expense
Loans become less attractive	Parents of 16-18 year old apprentices face losing benefits	Is the 5% non-levy payer contribution a barrier?

Interest rates are expected to rise significantly



UK interest rate forecast



TRADINGECONOMICS.COM | BANK OF ENGLAND

Source: <https://tradingeconomics.com/united-kingdom/interest-rate>

Political turbulence and the need for fiscal intervention



Learning in the Cold: The Cost-of-Living Crisis and Post-16 Education and Skills

"By bringing together different perspectives of the cost-of-living crisis on different parts of the post-16 education and skills system in England in a single volume, we hope that the Government will be better placed to formulate a comprehensive policy response to sustain participation in post-16 learning in the weeks and months ahead."

Julia Wright and Mark Corney, Campaign for Learning



Learning in the Cold

**The Cost-of-Living Crisis and
Post-16 Education and Skills**

October 2022
Julia Wright and Mark Corney (Editors)





Learner engagement and support

Transport and delivery flexibility



Support with transport costs, including discounted travel passes



Using digital technology to conduct meetings remotely

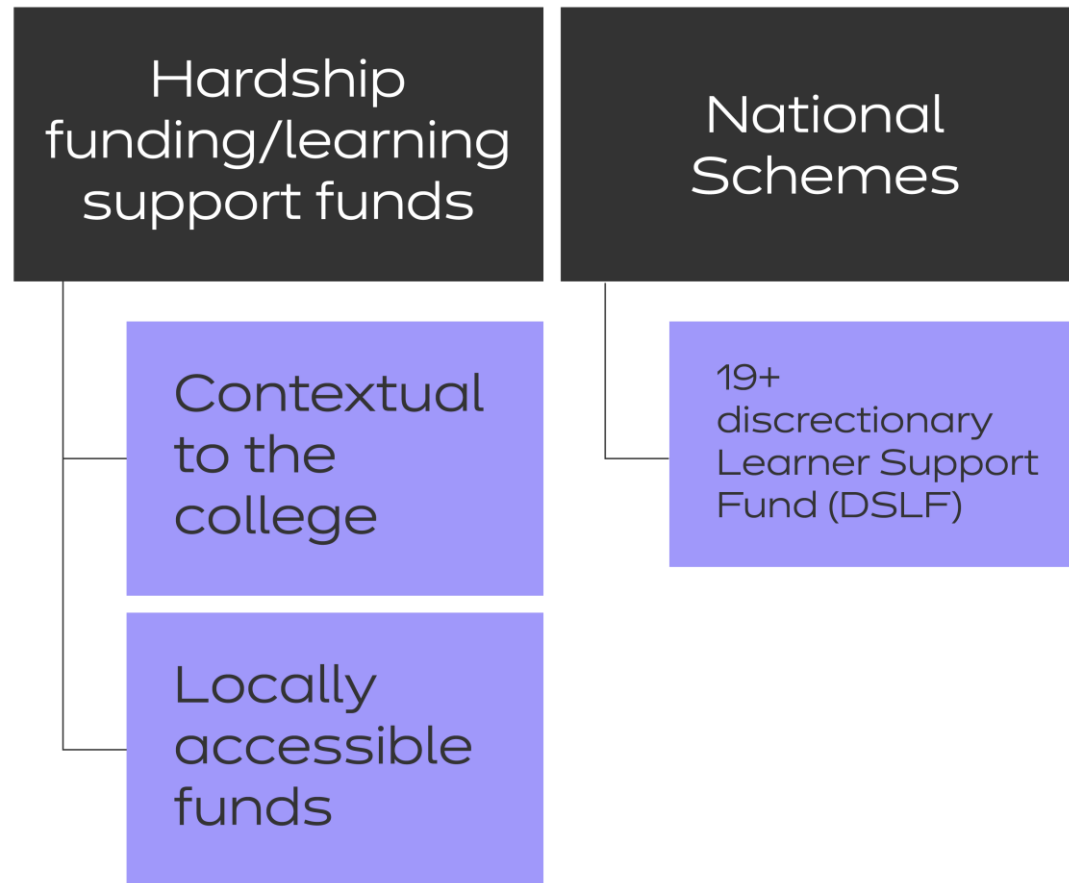


Providing learners with options for blended and independent study, enabling them to fit studies around work and life



Some have even talked about moving to a four-day week for college opening

Direct support



Effective signposting and support



Understanding the support networks within your local area



Organisations like Mind, Citizens Advice, and National Energy Action



Supporting learners with charity and grant applications



Supporting local communities



GOOD FOR ME

GOOD FOR FE



Good for ME Good for FE timeline



- #FEFoodBankFriday was launched in March 2020 to support local people in need – the campaign went on to raise over £50k and collected over 20,000 food items nationally
- Building on the fantastic support of the #FEFoodBankFriday, the #FestiveFEFoodBankFriday was launched in October 2020 to support local communities in the run up to Christmas – an especially challenging time for many families already dealing with financial pressures
- Good for ME Good for FE was founded by Loughborough College, London South East Colleges and East Coast College in March 2021, with the aim of generating £1million of social value through volunteering.



GOOD FOR ME
GOOD FOR FE

Loughborough
COLLEGE est. 1909

LONDON
SOUTH EAST
COLLEGES

eastcoast
COLLEGE



Campaign overview



The campaign aimed to create positive and sustainable impact to communities by generating £1m of social value through:

- 100,000 volunteering hours
- 20,000 food items donated
- Engaging partner organisations.





Campaign overview



Each objective was chosen to support local families facing financial challenges or charities with a need to diversify income streams.

In addition, volunteering is linked to:

- Improved happiness
- Improved life satisfaction and quality of life
- Reduced depression and anxiety.



Engagement



- Over 140 colleges committed to supporting the campaign
- 6 national partnerships with charities and corporate organisations
- 55 local partnerships with charities and corporate organisations.

By the end of the 2021-22 academic year, the campaign had doubled its original target, by generating over £2m of social value through:

- 118k volunteering hours
- 99k food items donated
- Over £157k fundraising.





Supporting local communities



- Good for ME Good for FE has been the catalyst for colleges across the country using social action to tackle problems within their local communities
- From community kitchens to beach litter picks, encouraging volunteering has had positive impacts on communities across the country
- The campaign focuses on driving social action through a flexible approach, giving colleges the tools to participate in national activities while supporting local needs.



GOOD FOR ME
GOOD FOR FE

Trafford College



- Delivered care packages and educational resources to students who needed them during the first lockdown
- Launched its **Community College Kitchen** to support students and community partners – including The Samaritans, Loudspeaker, The Proud Trust and Bare Necessities
- Provides food, personal hygiene products and learning resources, promotes wellbeing and helps to address inequalities that may impact future life choices and progression of students.



GOOD FOR ME
GOOD FOR FE

Kirklees College



- A group of students embarked on an environmental awareness trip to Scarborough's North Bay
- The trip included learning about the impact of pollution on sea life and ended with a beach clean-up
- Educating the next generation is vital to supporting sustainable sea life.



26 MILE TRAIL
2ND OCTOBER 2022
@ 09:00

The trail is 26 miles long, with 2800ft of ascent, taking in some of the most beautiful scenery Huddersfield has to offer. The trail takes on roads, public footpaths and follows some of the Great Pennine Trail.

IN LOVING MEMORY OF:
Katrina Cross

Entries @
www.thekirkwoodmemorialtrail.eventbrite.co.uk
Entries close on 25.09.2022

THE KIRKWOOD SUPPORT LIFE

START/FINISH @ SHEPLEY CRICKET CLUB, HD8 8AS.

KIRKLEES COLLEGE Shepley Spring STAFFLEX KAL mindlabs.media DESIGN | WEB | SIGN Penistone

SCAN & DONATE



GOOD FOR ME
GOOD FOR FE

City College Plymouth



GOOD FOR ME
GOOD FOR FE



"It really hit home to our students to learn their peers were missing out on their education just to be able to feed themselves and their families. It is a cruel reality that foodbanks are needed at all, but if having one on campus makes someone's day that little bit easier, we're pleased to be able to support them in this way."

Bob Hunter

Head of Student Journey, City College Plymouth

Loughborough College



- Donated a day to help a Charnwood charity, which provides vital support for homeless families and vulnerable people
- Activities included painting, gardening, cleaning and sorting donations.

“We wanted to help our friends at Falcon Support Services. They are the unsung heroes of the community yet do so much to transform lives. It was a privilege for us to be able to help in a small way.”

Anne-Marie Francis, Vice Principal at Loughborough College



Newark College



- BBC Countryfile will be visiting Newark college to film a part for their Christmas special. The segment will focus on the social eating projects Newark have organised within the local community and how this has impacted students learning, college life, building relationships, and isolation in the community.
- Through a local partnership with Wasteknot and Fareshare, students will be taking part in a celebration of serving 5 million meals in the local community. Students will be working with chefs to prepare, cook and serve meals to guests, with food that would otherwise have gone to waste. Reducing food waste is a key driver in enabling families and individuals to reduce costs while supporting wider environmental activities.



GOOD FOR ME
GOOD FOR FE

London South East Colleges



- As part of 2021 Festive Foodbank Drive, LSEC's staff and students came together to donate over 50 Christmas hampers to local foodbanks containing Christmas food and toiletries, in addition to the ongoing foodbank drive.
- LSEC supported the South London Christmas Dinner, aimed at giving young care leavers a fun-filled Christmas Day. As well as raising over £200 from LSEC's virtual Santa Dash, hospitality students produced 30 hampers to be given as gifts to guests.
- *Plans have already begun for the 2022 Festive Foodbank, which will aim to provide even more support to students and communities across South East London through foodbank donations to support families most in need.*

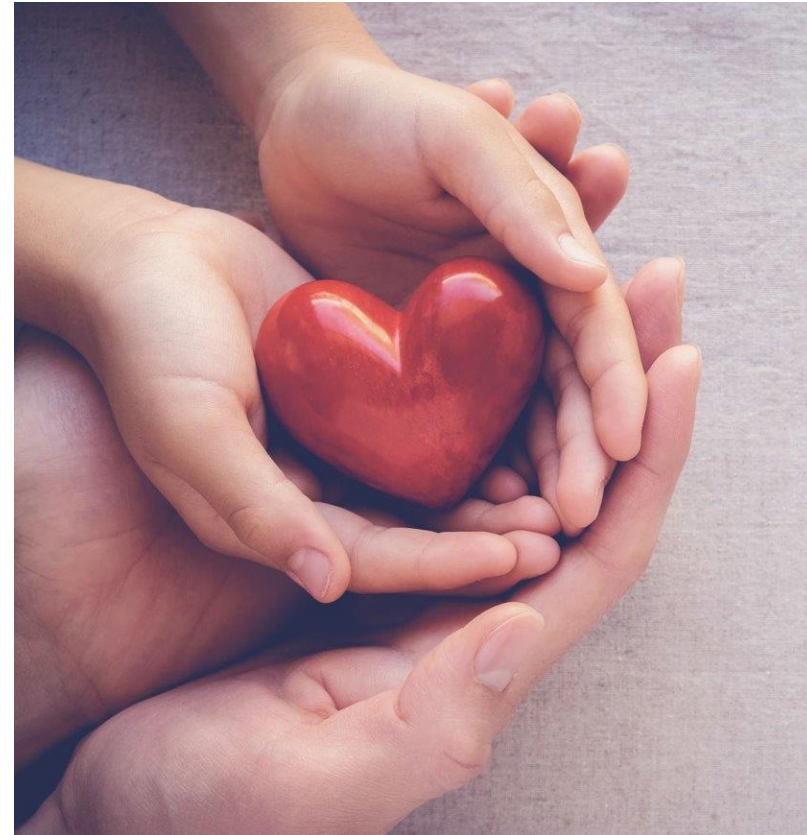


Other sector initiatives



Colleges across the country have continued to support the campaign through a wide range of initiatives, including:

- Creating college and community foodbanks
- Providing community lunches to vulnerable members of the community
- Free breakfast initiatives, supporting students who face financial hardship as well as increasing student engagement
- Holistic support for staff and students including wellbeing activities
- A wide range of fundraising activities.





Questions or comments

ETC2

A grayscale photograph of two young women sitting at a desk, smiling and looking at a tablet together. The woman on the left is holding the tablet, and the woman on the right is pointing at the screen. The background is slightly blurred, showing what appears to be a classroom or study area.

**SHAPING
SMARTER
LEARNING**